

ORIN THOMAS & SONS, INC.

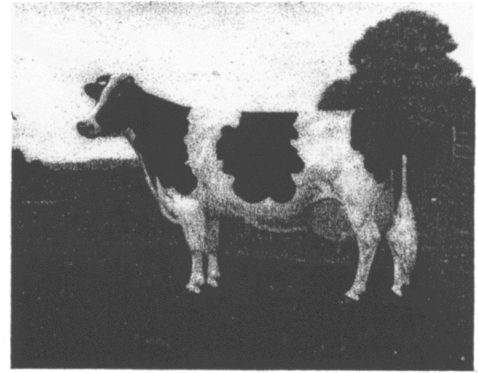
THOMAS DAIRY :: CEDARDALE STOCK FARM

HOLSTEIN FREISIAN CATTLE

FINE DAIRY PRODUCTS SINCE 1921

Telephone 773-6788

RUTLAND, VERMONT 05701



THOMAS DAIRY IDLING REDUCTION POLICY

PURPOSE: To benefit Thomas Dairy and its employees in the following ways:

- Protect health of operators and people in the vicinity of the vehicle
- Save money by saving fuel and reducing engine wear
- Reduce carbon emissions and damage to the environment
- Conserve energy
- Comply with municipal and state laws

POLICY: All Thomas Dairy employees who operate any vehicle owned or leased by Thomas Dairy will limit the idling of the vehicle in the following ways:

- In general, operators will eliminate unnecessary engine idling
- Limit warm up idling to no more than five minutes
- Shut the engine off when at loading dock or upon arriving at destination
- Never let the engine run while the vehicle is unattended

EXEMPTIONS:

- For safety reasons, vehicle windshield defrosting must be adequate
- If the vehicle must stop on a public road because of traffic conditions over which the operator has no control
- For generating heat in the cabin in extreme weather (but not for cooling cabin) or if the vehicle is equipped with a sleeper berth and is occupied by the operator for the purpose of sleeping or resting.
- For operation of essential on-board auxiliary equipment, when battery power is no longer or not practical
- When being maintained, repaired or tested, as needed

Perry J. Thomas, V.P.